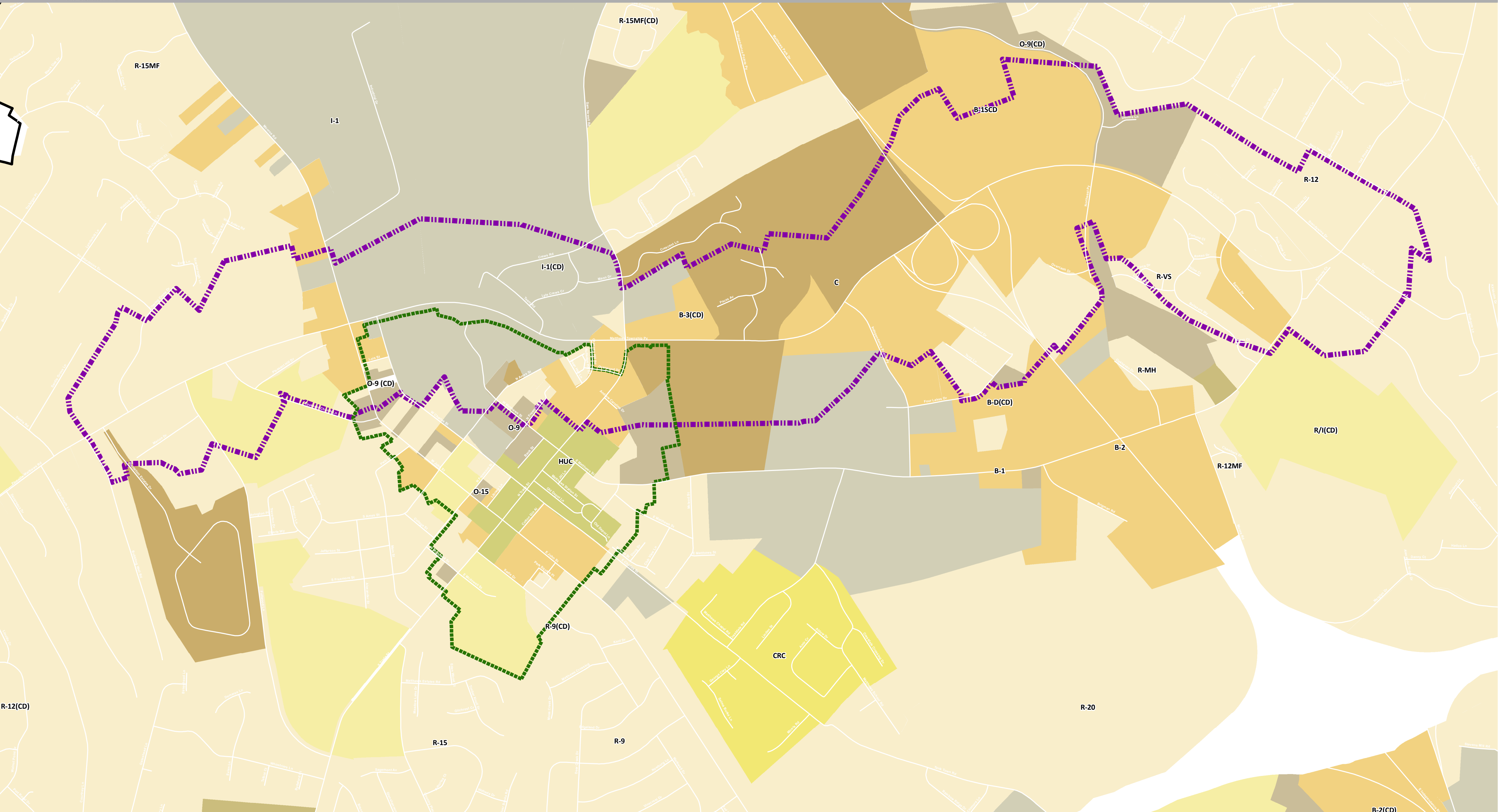
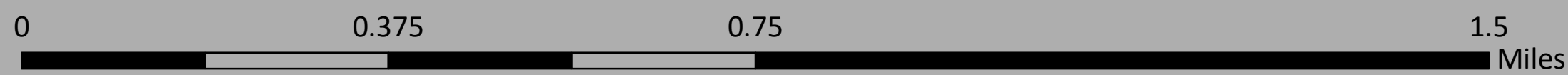




Town of Matthews Overlay Districts



This map was produced with GIS resources from the Town of Matthews Planning Department and Mecklenburg County GIS Services to provide support for community planning. This map comprises data from several sources. Source information may have been collected at different times, scale, or definition, resulting in inconsistencies among features represented. The Town of Matthews assumes no liability for damages caused by inaccuracies in this map or source information. The Town of Matthews makes no warranty, expressed or implied, for the accuracy of information presented.



Special Highway Overlay District	Office
Downtown Overlay District	Business
Residential	Historic Urban Core
Crestdale Conservation	Adult Use
Rural	Industrial
Residential/Institutional	Conditional