

### Squirrel Lake Park

- 1631 Pleasant Plains Road
- 29 acre park
- Fishing pond with pier
- 2 shelters with picnic tables
- Outdoor grill areas
- Restrooms
- Playground & swings
- Cornhole boards
- 12 hole disc golf course
- Walking trails
- Parking & connector trail to Four Mile Creek Greenway



### Stumptown Park

- 120 S. Trade Street
- 1 acre park
- Performance stage
- Sand play/dance area
- Outdoor grill & picnic area
- Brick patio picnic area
- Playground
- Sand volleyball court
- Veteran's Memorial site
- Restrooms



### Windsor Park

- 10140 Northeast Parkway
- 5.24 acre park
- Picnic shelter with tables
- Outdoor grill
- Walking trail
- Open grass play area
- Playground & swings
- Restrooms



### Four Mile Creek Greenway

- Downtown Matthews
- 2 miles of walking trails
- Multiple neighborhood connectors
- Parking available at Squirrel Lake Park & Matthews Community Center
- Joint project between Town & Mecklenburg County



### Fountain Rock Park

Along Four Mile Creek Greenway

- Fountain & sitting area



### KP Park

- 320 E. Matthews Street
- Pocket park near Town Hall/Public Library with seating areas & gazebo
- Serves as a passive area for people to gather, relax, & enjoy the outdoors



## Enjoy Matthews Parks, Facilities, & Greenway

**Parks are open from dawn to dusk each day**  
To reserve a shelter at any of these parks, call  
**704-321-7275**

Parks and Facilities are tobacco free

### Matthews Community Center

- 100 McDowell Street • 704-321-7275
- Classes & programs for all ages: dance, art, drama, holiday events, etc.
- Fullwood Theater: 362 Seat Theater with Dressing Rooms
- 9 classrooms
- Large community/banquet room
- Caterer's kitchen
- 2 dance studios
- Room rentals available
- Home to the Matthews Playhouse



### McDowell Arts Center

- 123 McDowell Street • 704-847-9746
- Art classes, programs, and demos for all ages
- Gallery display space with monthly rotating exhibits
- Home to the Matthews Artist Guild, KidzArt, and more!



### Crews Recreation Center

- 1201 Crews Road • 704-708-1287
- Full size gymnasium
- Multi-purpose rooms
- Open gym for basketball, volleyball & pickle ball
- Camps, classes, & athletic leagues
- Room rentals available



### Baucom Park

- 601 Sadie Drive
- 1 acre park
- Picnic shelter with tables
- Outdoor grills
- Playground & swings
- Little Free Library

### Matthews-Sardis Park

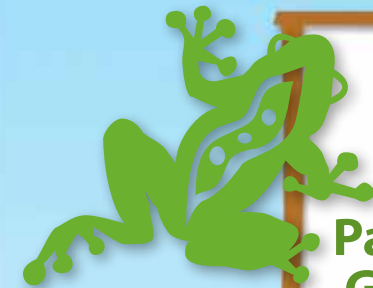
- 9650 Sardis Road
- 2.8 acre park
- Gazebo-style picnic shelter & picnic tables
- Playground & swings
- Paved walking trail
- Open grass play area
- Restrooms



Town of  
**Matthews**  
Parks, Recreation &  
Cultural Resource

For class and camp  
registration and  
shelter reservations, call  
**704-321-7275**

[www.matthewsnc.gov](http://www.matthewsnc.gov)



Town of  
**Matthews**  
Parks, Recreation &  
Cultural Resource

## Parks, Facilities, & Greenway Guide



# Matthews Parks, Facilities & Greenway



**Map Key**

- Greenway
- Creek
- Park
- Park & Rec Facility
- Bridge
- Restrooms
- Pedestrian Entrance (no parking)
- Greenway Parking
- Town Hall
- Police Department
- Fire Department

We are pleased that so many people are enjoying the Matthews Four Mile Creek Greenway and we hope that you will use it on a regular basis.

**The greenway is open from dawn to dusk.**

**All trail users, including bicyclists, joggers, walkers, people who use wheelchairs, skateboarders, and roller bladers, should be respectful and aware of other users regardless of their mode of travel, speed, or level of skill.**

- With the greenway near several neighborhoods please remember to be respectful of people, their lawns, and driveways. Do not "cut through" lawns. Use official greenway entrances.

- For your safety, please walk with a friend. Park your vehicle in an appropriate location and

secure valuables in your locked vehicle.

- We love animals but please scoop your pet's poop.
- Greenways are oriented along streams and through wetlands; some areas are subject to flooding, mud, and other slippery conditions. Please dress accordingly and plan ahead for weather conditions.

**The following are NOT permitted on or around the greenway:**

- Unrestrained pets or pets on leashes over 6 feet in length
- Children under 16 years of age riding bicycles, rollerblades, or skateboards without a helmet
- Operation of unauthorized motor vehicles
- Consumption of alcoholic beverages



- Use of ANY Tobacco product
- Collection, removal, or disturbance of any natural or cultural object
- Selling, soliciting, or exhibiting materials
- Damage of park property
- Parking in undesignated parking areas
- Commercial or political signs
- Trespassing after hours – greenway is open from dawn to dusk
- Littering
- Hunting

For **shelter reservations and class and camp registration**, call **704-321-7275**.

Visit [www.matthewsnc.gov](http://www.matthewsnc.gov) for more information and for the latest list of **programs and events**.

